

OWNER'S MANUAL



WHISTLER 1783/1793 SE LASER-RADAR DETECTOR



The Whistler Group Corporate Headquarters

13016 N. Walton Blvd. • Bentonville, AR 72712

Tel (479) 273-6012 • Fax (479) 273-2927

Customer Return Center

1201 N. Dixieland Rd. • Rogers, AR 72756

Customer Service Tel (800) 531-0004

www.whistlergroup.com

P/N 203336, REV 1 © 2003 The Whistler Group, Inc.

If you have questions concerning the operation of this Whistler product please call:

CUSTOMER SERVICE
1-800-531-0004

Monday - Friday • 8:00 am - 5:00 pm CT

or visit our website

www.whistlergroup.com

Please keep the receipt in a safe place. **You may register your product online at www.whistlergroup.com.** For warranty verification purposes, a copy of your dated store receipt must still accompany any unit sent in for warranty work. If the unit is returned without a dated store receipt an out of warranty service charge applies. **Note:** Your warranty period begins at the time of purchase. The warranty is validated **only** by the dated store receipt! Now is the time to record the serial number of the unit in the space provided in the warranty section of the manual.

INTRODUCTION

Dear Whistler Owner,

With the change in time also comes change in technology. Radar gun manufacturers have stepped up to the plate. The new arsenal they carry is called POP™ Mode. This new gun is a normal K or Ka band radar gun detectable by most radar detectors made in the past 30 years, unless the gun is placed in POP™ Mode. POP™ Mode is a feature on some newer radar guns operating on K or Ka bands. When the gun is in POP™ Mode and activated, a brief burst of energy, less than 1/10 of a second, is transmitted and the vehicle's speed is quickly acquired. A detector without POP™ Mode detection capability cannot respond to this brief transmission. This detector has the power to report this new gun where other detectors cannot! - until now!

Whistler introduces the 1783 and 1793 SE with POP™ Mode detection! These units are the beginning in total protection. With POP™ Mode detection, these units can react fast enough to detect this new technology. Packed with power you still have a full featured radar detector:

- **VOICE MEMO RECORDER** digitally records your voice message (1793 SE only).
- **COMPASS** provides points of direction.
- **REAL VOICE® ALERTS** are given verbally through the detector so you do not have to take your eyes off the road to look at the display.
- **TEXT DISPLAY** shows laser-radar information, VG-2 alerts, SWS messages, and detector status.
- **NEW POP™ MODE CAPABILITIES**

Even though these units are packed full of features, they're still very easy to use. To fully utilize your unit to its potential, we recommend reading this entire manual or visit our FAQ page on our web site www.whistlergroup.com.

Note: **Compass must be calibrated before use!** See Compass Calibration set-up section.

Enjoy your new Whistler and please drive safely.

Sincerely,

The Whistler Group, Inc.

TABLE OF CONTENTS

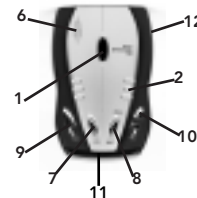
Model Features Summary.....	3 - 4
Installation.....	5 - 6
• Mounting Guidelines	
• Windshield Mounting	
• Power Connection And Fuse Replacement	
Operation.....	6 - 15
• Compass Calibration	
• Power On and Self-Test	
• Setting Saver	
• Feature Engaged Confirmation	
• Audio Level Adjustment	
• Integrated Real Voice®	
• Compass Mode	
• Auto Quiet Mode	
• Quiet Mode	
• City/City 1/ City 2 Mode	
• Highway Mode	
• Dim/Dark Mode	
• Engaging/Disengaging VG-2	
• Teach/Tutorial Mode	
• Option Select Mode	
• Vehicle Battery Saver Mode	
• Vehicle Battery Monitor	
• Stay Alert Feature	
• Memo Mode	
Safety Warning System™.....	15
POP™ Mode Alerts.....	15
Laser/Radar Alerts.....	15 - 16
• Speed Radar Audio/Visual Alerts	
• Laser Audio/Visual Alerts	
• Pulse Protection®	
VG-2 Alerts.....	16-17
• Alert Priority	
Reset Features.....	17
Troubleshooting Guide.....	18
Care and Maintenance.....	19
Are Detectors Legal?.....	19
FCC Information.....	19
Speed Monitoring.....	20 - 22
• Radar Facts	
• POP™ Mode	
• Laser Facts	
• Other Speed Detection Systems	
Warranty Information.....	23 - 25
Specifications.....	25
Accessories.....	26

WHISTLER FEATURES

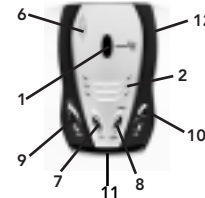
Feature Listing of 1783 and 1793 SE

- | | |
|---|-------------------------|
| • Digital Compass | • 3 City Modes |
| • Real Voice® | • Quiet Mode |
| • High Visibility Text Display | • Auto Quiet |
| • POP™ Mode Detection Capabilities | • Vehicle Battery Saver |
| • All Band™ | • Setting Saver |
| • 360° Protection | • Dim/Dark Mode |
| • VG-2 Cloaking™ Technology | • Stay Alert™ |
| • Safety Warning System™ Selectable Bands | • Tutorial Mode |

1783

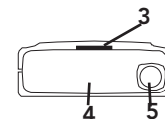


1793 SE



1783 Accessories:
 Windshield Bracket,
 Power Cord

1793 SE Additional Features
 • Memo Voice Recorder
 • Vehicle Battery Monitor
1793 SE Accessories:
 Windshield Bracket, Power
 Cord, Travel Bag and Socket
 Multiplier



FEATURE DESCRIPTIONS

Whistler's ergonomic and user-friendly design provides a new level of operating convenience. Special features include: **Note: Not all units have all features listed.**

1. **Bracket Release Button** – Provides quick and easy release of the mounting bracket.
2. **Speaker** – Provides distinct audio warnings for X, K, Ka band radar, safety radar, laser and VG-2.
3. **Mounting Bracket Location** – Slot holds mounting bracket firmly.
4. **Radar Antenna** – Compact, high-efficiency antenna receives radar signals.
5. **Front Laser Antenna** – High gain optical lens provides increased sensitivity and field of view for leading-edge laser detection.
6. **Rear Laser Antenna** – An integrated optical wave-guide provides superior detection of laser signals transmitted from behind.
7. **City Button** - Reduces the annoyance of false alerts typically encountered in urban driving areas.
8. **Quiet/Menu Button** - Pressing QUIET before a signal is detected engages Auto Quiet Mode which automatically reduces the audio level after the initial warning to a low audio level setting. Pressing QUIET during a radar/laser encounter silences audio alerts, while allowing visual alerts to keep you informed. Pressing and holding for 2 seconds allows you to enter Option Select Mode (see page 12).
9. **Power/Dim Dark** - Turns unit on/off and engages Dim/Dark modes (press and hold for 2 seconds).
10. **Volume Up/Down Buttons** – Adjust volume up or down.
11. **High Visibility Text Display** – Provides distinct visual confirmation of signals detected, signal strength, and indicates engaged modes of operation.
12. **Power Jack** – Provides connection for the power cord.

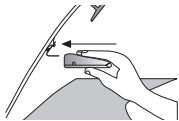
INSTALLATION

Mounting Guidelines

- Mount the unit as low as possible near the center of the windshield.
- Do not mount your unit behind wipers, ornaments, mirrored sunscreens, etc. These obstructions have metal surfaces which can affect radar and laser signals and reduce critical warning time. (Regular tinted glass does not affect reception.)
- Some windshields have an Instaclear™ or Electriclear™ type coating, which affect radar signals. Consult your dealer or the owner's manual supplied with your vehicle to determine if your windshield has this coating.
- Avoid placing unit in direct contact with windshield.
- To reduce the possibility of theft, conceal your unit when not in use.

Windshield Mounting

- Install the two suction cups and rubber bumper onto the bracket by fitting them into their holes.
- Press the suction cups onto the windshield at the location you have chosen. **IMPORTANT:** Some newer cars have a plastic safety coating on the inside of the windshield. The windshield bracket may leave permanent marks on this type of surface. To find out if your vehicle has this type of windshield, check the owner's manual or ask your dealer. We recommend that you do not leave the suction cup bracket on the window in direct sunlight.



INSTALLATION

If the detector is removed, this may cause blistering of the dash in some vehicles.

- Slide the detector onto the bracket until it locks into place.
- If necessary, the unit may be leveled by bending the windshield bracket. Press the bracket release button and remove the detector before bending.

Power Connection

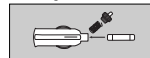
- Plug the small end of the power cord into the unit's power jack.
- Plug the large end into the vehicle's cigarette lighter.

NOTE: Cord fits tightly into detector. When installing the cord, expect some resistance.

Fuse Replacement

The lighter socket plug is equipped with a replaceable 2 amp 3AG fuse located behind the silver tip. To replace the fuse, carefully unscrew the tip of the plug.

IMPORTANT: Unscrew slowly. The tip contains a spring which may fly out when disassembling. Insert the new fuse with the spring and screw on the tip. **With use, screw cap on plug may loosen. Retighten occasionally.**



Unscrew the tip of the lighter socket plug carefully when replacing the 2 amp fuse.

OPERATION

Compass Calibration Set-up

The unit will need to be calibrated in order for the compass to provide accurate readings. To calibrate the unit, perform the following procedure:

1. Mount the unit level in the center of the vehicle's windshield in which it will be used. Make sure there are no other magnetic sources near the detector (i.e., speaker).

OPERATION

Compass Calibration Set-up Continued

2. Select a large clear area (*parking lot or field*) without any power lines.
3. 1783 only - While parked, press both volume buttons simultaneously.
1793 Only: Press and hold quiet button until display says CALMODE. Then press both volume buttons simultaneously. The display shows (scrolling):

Drive in two complete circles

4. If calibration does not automatically finish press both volume buttons simultaneously to complete calibration. The unit will beep twice and display, for example:

CAL DONE → NE 45

Note: If unit mounting is relocated in the vehicle, (i.e., visor to windshield mounting or dash mounting), or if the unit is moved to another vehicle, you must recalibrate the compass.

Power On and Self-Test

Each time your Whistler detector is turned on, an automatic self-test sequence confirms that the speaker and visual displays are functional.

- Press Power or apply Power. Display reads in order:
1. WHISTLER 2. X-band 3. K-band 4. Ka-band
5. LASER 6. SR ON 7. VG2 OFF 8. B SVRON
9. POP ON 10. HWY 11. NE 45°

Setting Saver

Setting Saver saves your personalized settings so that when the detector is turned off and then on again, you do not have to re-enter them.

Feature Engaged Confirmation

Each time a button is pressed one beep confirms feature "on", two beeps confirm feature "off".

OPERATION

Audio Level Adjustment

The audio levels can be adjusted high to low or low to high, in seven steps.

- Press Volume ▲ up to increase audio level.
- Press Volume ▼ down to decrease audio level.

As audio level is adjusted, beeps are provided and the display indicates volume level.

Integrated Real Voice®

When selected, Real Voice® will be used to articulate the following:

1. Band Identification
2. Safety Warning System messages
3. Feature Selection

NOTE: In certain cases the voice message does not replicate the text message.

Compass Mode

The unit is programmed from the factory in "Combo Mode". **COMBO** mode means that the unit provides both compass readings as well as detecting laser/radar signals. Through the "Option Select Mode", either laser / radar or compass features can be turned off meaning, **RADAR** equals detection of all police bands and laser; **Compass** equals no detection of police laser/radar.

NOTE: The unit must be calibrated to provide accurate compass readings. See Compass Calibration Set-up section on page 6 & 7.

Auto Quiet Mode

Auto Quiet reduces the selected audio level to level (1) approximately 5 seconds after a radar or safety radar signal is detected. The alert for any new signal within 20 seconds will resume at level (1). Auto Quiet does not affect VG-2 or laser alerts.

OPERATION

Auto Quiet Mode Continued

- Press Quiet/Menu (before a signal is detected) to engage Auto Quiet.
- Once the Auto Quiet mode is engaged, you may cancel the audio alarm by pressing Quiet.
- Press Quiet (when the unit is not alarming) to cancel Auto Quiet mode.

Quiet Mode

Quiet cancels audio during an alert and any new alert within 20 seconds. After 20 seconds, approximately 2 beeps are provided on any new alert and unit then remains quiet.

- Press Quiet to cancel the audio.
- Press Quiet a second time during an alert to restore the standard audio alert pattern; or turn the unit off, then on.

City/City 1/City 2 Mode

Whistler's Three Stage City Mode is designed to reduce the annoyance of automatic door openers, intrusion alarms and other devices which share frequencies with police radar. Generally X band is used for these devices.

- Press City to cancel Highway mode and engage City.
- Press City a second time engages City 1.
- Press City a third time engages City 2.
- Pressing City a fourth time cancels City Modes and returns the unit to Highway Mode.

In City Mode, weak speed/safety radar signal give an initial alarm of two beeps, and then remains quiet unless the signal becomes very strong. When the signal strength increases, two additional beeps are provided.

City 1 and City 2 Modes operate the same as Highway Mode, but in City 1 Mode, only the X band sensitivity is lowered. In City 2 Mode, X-band is not detected.

OPERATION

City/City 1/City 2 Mode Continued

CAUTION: Some towns/small cities may still be using X band radar. If Auto Quiet is engaged in City 1 or City 2 modes and the unit receives a strong radar signal, the unit performs the Auto Quiet feature. City Modes do not change the audio alert for laser or VG-2.

Highway Mode

Highway mode provides full audio warnings any time radar (X, K, Ka, Safety Radar) or laser signals are detected, and is recommended for open road driving.

For more information on City and Highway mode, please visit our FAQ page on our website: www.whistlergroup.com

Dim/Dark Mode

Dim/Dark Mode reduces the illumination of the display.

- Press and hold Power for 2 seconds to reduce illumination to a Dim setting.
- Pressing and holding the power button for 2 seconds a second time engages Dark Mode. The display illumination is further reduced.

Dim or dark can be engaged during an alert. In Dark Mode, the display goes dark for as long as a signal is being detected and for 20 seconds after, then the display returns to the dimmer setting.

- Pressing and holding the power button a third time restores full illumination to the display.

Engaging/Disengaging VG-2

See option select mode to turn this feature on.

Teach/Tutorial Mode

Provides simulated alerts for each type of signal.

- Press City and Quiet simultaneously and release.
- Press Power to exit.

OPERATION

Option Select Mode

Entering Option Select Mode allows you to customize options such as Tone Select, Compass Select, Abbreviated Power Up Sequence and VG-2 Mode. When selecting options, the ▲, ▼ or quiet must be pressed within 20 seconds or options mode will automatically be exited. To enter:

1783 Chart

Press: Quiet	Display Reads:	To Change:	Option:
For 2 Seconds	COMBO	▲ OR ▼	Combo= Radar & Compass Radar= Radar Only Compass= Compass Only
1st Time	TONE 3	▲ = YES ▼ = NO	Tone 1, 2, 3 (3 different X, K, Ka Patterns)
2nd Time	TEST YES	▲ = ON ▼ = OFF	X, K, Ka Audio tones 1 beep during Power Up
3rd Time	VG-2 OFF	▲ = ON ▼ = OFF	Turns VG-2 On Turns VG-2 Off
4th Time	SR ON	▲ = ON ▼ = OFF	Turns Safety Radar On
5th Time	VOICE ON	▲ = ON ▼ = OFF	Real Voice Engaged Real Voice
6th Time	Pop ON	▲ = ON ▼ = OFF	Pop On Pop Off
7th Time	B SVR ON	▲ = ON ▼ = OFF	Battery Saver On Battery Saver Off

OPERATION

1793 SE Chart

Press: Quiet	Display Reads:	To Change Reads:	Option: Press
For 2 Seconds	Cal Mode	▲ Press Both	Starts Compass Calibration
1st Time	COMBO	▲ OR ▼	Combo= Radar & Compass Radar= Radar Only Compass= Compass Only
2nd Time	TONE 3	▲ = YES ▼ = NO	Tone 1, 2, 3 (3 different X, K, Ka Patterns)
3rd Time	TEST YES	▲ = ON ▼ = OFF	X, K, Ka Audio tones 1 beep during Power Up
4th Time	X ON	▲ = ON ▼ = OFF	X Band On X Band Off
5th Time	K ON	▲ = ON ▼ = OFF	K Band On K Band Off
6th Time	Ka ON	▲ = ON ▼ = OFF	Ka Band On Ka Band Off
7th Time	LASER ON	▲ = ON ▼ = OFF	Laser Band On Laser Band Off
8th Time	VG-2 OFF	▲ = ON ▼ = OFF	Turns VG-2 On Turns VG-2 Off
9th Time	SR ON	▲ = ON ▼ = OFF	Turns Safety Radar On Turns Safety Radar Off
10th Time	VOICE ON	▲ = ON ▼ = OFF	Real Voice Engaged Real Voice Disengaged
11th Time	Pop ON	▲ = ON ▼ = OFF	Pop On Pop Off
12th Time	B SVR ON	▲ = ON ▼ = OFF	Battery Saver On Battery Saver Off

OPERATION

Vehicle Battery Saver Mode

The Vehicle Battery Saver Mode automatically shuts off your detector within 3 hours if you forget to turn it off. The timer is reset if the detector is turned off, unplugged or any button is pressed before the 3 hours have expired. The detector will alert you with an audible and visual warning before it shuts off.

During this warning you can reset the unit by pressing any button. This will reset the timer.

If the unit has automatically turned itself off, press the Power button to turn the unit back on. You can manually engage the Vehicle Battery Saver Mode by pressing and holding the City button until one beep is heard.

Refer to "Option Select Mode" for instructions for deactivating battery saver mode feature.

Vehicle Battery Monitor (1793 SE only)

The vehicle's battery voltage can be momentarily displayed by pressing and holding both volume buttons for 3 seconds.

Stay Alert Feature

The Stay Alert Feature is designed to test a driver's alertness. To engage (when unit is not alarming) :

- Press and hold City for approximately 2 seconds. Release button during or immediately after the alert is given. Display reads: (RU ALERT)

Within 30-60 seconds two beeps are sounded; to show alertness, the driver must press either the City, Volume, or Quiet buttons within 3-5 seconds. If button is pressed within 3-5 seconds, the cycle is repeated.

If a button was not pressed within 3-5 seconds alarm sounds and the display reads: (GET REST)

- Press Power to exit.

WARNING!!! Stay Alert is NOT intended as a substitute for adequate rest. You should NOT operate a vehicle if you are drowsy. During extended periods of vehicle operation, you should take frequent breaks. Improper reliance on the Stay Alert feature may result in vehicle damage, personal injury or death. **NEVER OPERATE A VEHICLE IF YOU ARE DROWSY.**

OPERATION

Memo Mode (1793 SE only)

Record up to nine distinct message tracks for a total of 90 seconds, one 90 second message or any combination in between.

IMPORTANT: Unit does not detect radar or laser signals during recording or while playing a memo.

WARNING!!! Memo mode is not intended to be used while you are driving. You should not use any device in a vehicle that may distract you from observing the road ahead.

To record or play a message (Memo mode):

- Press both volume buttons for less than 2 seconds and release. The unit will beep once; this enters Memo mode. Display reads:



- Press and release the Quiet/Record button to begin a recording. Note: Recording starts as soon as the button is released. Display reads:

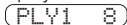


REC = record, 1 = track #, 8 = time remaining

If the recording time expires for a track, the unit will automatically switch to the next track. Press and release Quiet/Record again to stop recording. The unit will automatically stop recording once track 9 is completed.

To play a message:

- Enter Memo mode and press Power/Play to listen to recorded messages.
- To play a selected track, press Volume Up or Volume Down button until selected track appears on the display. Display reads:



PLY = play, 1 = track #, 8 = time remaining

- Press the Power/Play button.

Messages are kept in memory and are not affected by resetting the factory features. See "Reset Features" section of the manual.

OPERATION

Memo Mode Continued

To delete a message:

- Enter Memo mode and press Volume Up or Volume Down button until selected track appears on the display.
- Press the Quiet/Record button twice.

To exit Memo mode:

- Press both volume buttons and release. The unit will beep twice.

NOTE: Memo mode automatically exits within 20 seconds if a button is not pressed.

SWS™

Safety Warning System™

In communities where transmitters are located, the Safety Warning System™ displays over 60 text messages. When Safety Radar is detected the audio alert is geiger counter-like.

Safety Warning System Text

Example: Poor - Road - Surface.

NOTE:

Not all areas have Safety Warning System™ transmitters.

POP™ MODE ALERTS

POP™ Mode Alerts


Because POP™ Mode travels on regular radar bandwidth, there is no particular alert for POP™ Mode transmissions. POP™ Mode alerts will be displayed as a regular radar alert.

LASER/RADAR ALERTS

Speed Radar Audio / Visual Alerts

When X, K or Ka is detected the band ID and signal strength is displayed. The audio alert is continuous and has a geiger counter-like pattern. The faster the beep the closer or stronger the radar source.

Laser Audio / Visual Alerts

When a laser signal is detected the word "Laser" and signal strength is displayed, the audio alert is continuous for a minimum of 3 seconds. Example:  The more "|||" the closer the laser source.

Pulse Protection®

Pulse (or instant-on) radar is more difficult to detect than conventional radar because it remains "off" until activated to measure the speed of a targeted vehicle.

When a pulse type transmission is detected, your Whistler detector sounds an urgent 3-second audio warning and the display shows PULSE (like the picture above). After the 3-second pulse alert, the standard alert pattern continues for as long as the signal is present.

It is important to respond promptly to a pulse alert, since warning time may be minimal.

VG-2 ALERTS

VG-2 Audio/Visual Alerts

NOTE: You must turn this feature on in option select mode before it will detect VG-2.

When a VG-2 signal is detected, the detector "hides" its own radiated signal and becomes undetectable by the VG-2.

Every 30 seconds, the detector checks for a VG-2 signal. If a VG-2 signal is still present, the unit continues to hide and repeats the VG-2 alert. If no signal is detected, two beeps are provided, indicating an "all clear" condition. During VG-2 Alert X, K, and Ka band signals cannot be received (Reference page 19 & 20 for VG-2 information).

VG-2 ALERTS

Alert Priority

When two or more signals are received at the same time, the alert priority is:

1. Laser
2. VG-2
3. Speed Radar
4. Safety Radar

Example:

If X band is alerting, then suddenly VG-2 is detected, the VG-2 warning will override the X band alert.

RESET FEATURES

Reset Features

All user features can be reset to factory settings.

- Unplug Power Cord from unit.
- Press and hold Power and Quiet.
- Plug Power Cord into unit.
- Wait for 2 beeps.
- Release Power and Quiet buttons.

Unit is now reset.

Default factory settings are:

1. Audio to level (4).
2. Display reads Highway.
3. Dim/Dark Mode to full illumination of display.
4. Auto Quiet Mode OFF.
5. VG-2 Detection Mode OFF.
6. Combo ON.
7. Safety ON.
8. Vehicle Battery Saver ON.
9. Full Power Up sequence.
10. Default TONE 3.
11. All Band ON
12. POP ON
13. Unit ON or OFF.

NOTE: Must calibrate compass after resetting features.

TROUBLESHOOTING

Your Whistler detector is expertly engineered and designed to exacting quality standards to provide you with reliable, trouble-free operation. If your unit has been correctly installed following the guidelines in this manual, but is not operating optimally, please refer to the troubleshooting guide below.

PROBLEM: No display or audio.

- Check fuse in Whistler plug; replace if necessary with a 2 amp 3AG type.
- Check fuse for lighter socket; replace if necessary.
- Make sure lighter socket is clean.

PROBLEM: Unit alarms when vehicle hits bumps.

- Check for loose lighter socket; tighten and clean.
- Check connections at both ends of power cord. Substitute another cord to determine if cord is defective. Return defective cord to the factory.

PROBLEM: Unit alarms when using vehicle electrical accessories (brakes, power mirrors/windows, turn signals, horn, etc.).

- Vehicle's electrical system, including battery and alternator, may have electrical noise. Install a filter capacitor (470mfd. 25 volt or larger capacitance value) on the back of the lighter socket.

PROBLEM: Unit gives laser alert when accelerating.

- Possible bad or low quality distributor cap. Replace with high quality cap.

PROBLEM: Audio alerts are not loud enough.

- Cancel Auto Quiet Mode or City Mode.
- Check audio level setting (see page 8 & 9).

If difficulties occur which cannot be solved by information in this Troubleshooting Guide, please call Whistler Customer Service at 1-800-531-0004 or visit our FAQ page at www.whistlergroup.com/faq-detectors.asp, before returning your unit for service.

CARE AND MAINTENANCE

Care And Maintenance

During the summer months, avoid prolonged exposure to direct sunlight by removing your unit from the dash when your vehicle is parked for an extended period of time. Do not spray water, cleaners, or polishes directly onto the unit. The spray may penetrate through the openings and damage the unit. Also, do not use any abrasive cleaners on the units exterior.

ARE DETECTORS LEGAL?

In Most States YES!

Laser/radar detectors are legal in every state (with the exception of Virginia and Washington, D.C., which have local regulations restricting the use of radar receivers in any vehicle) when used in automobiles or light trucks (under 10,000 lbs.).

Concerning trucks over 10,000 lbs., the Federal Highway Administration (FHWA) issued a regulation, effective January, 1994 which prohibits radar and laser detector use in these types of vehicles nationally. Prior to the FHWA regulation, laws existed in the state of New York restricting the use of radar detectors in trucks over 18,000 lbs. and in Illinois in trucks over 26,000 lbs.

FCC INFORMATION

FCC ID HSXWH11 - 1783, 1793 SE

This device complies with part 15 of the FCC Rules. Operation is subject to the following two conditions: (1) This device may not cause harmful interference, and (2) this device must accept any interference received, including interference that may cause undesired operation.

IMPORTANT

FCC requirements state that changes or modifications not expressly approved by Whistler could void the user's authority to operate the equipment.

SPEED MONITORING

Radar Detector Detectors (VG-2)

The Interceptor VG-2, or simply VG-2, is a microwave receiver used by police to detect signals radiated by the local oscillator of a radar detector. Because its purpose is to identify persons driving with radar detectors, the VG-2 is known as a "radar detector detector".

The VG-2 is the primary tool used by the police to identify radar detector equipped vehicles. If caught, in a state where detectors are illegal, (see page 19), drivers risk losing their radar detector and receiving a fine. In addition, instant-on radar is almost always used in combination with a VG-2, leaving unsuspecting motorists vulnerable to receiving two tickets - one potentially for speeding, the other for possession of a detector.

Having a radar detector capable of detecting the VG-2 may alert you to the presence of a speed trap. For more information on speed monitoring technologies, please visit our FAQ page on our website:

www.whistlergroup.com

NOTE: It is the responsibility of the individual radar detector owner to know and understand the laws in your area regarding the legality of the use of radar detectors.

SPEED MONITORING

Radar Facts

A radar gun operates by transmitting radio waves at certain frequencies which reflect off objects and are then picked up by the radar gun's receiving section. When a radar beam reflects off a moving target, a measurable frequency shift occurs. The radar unit converts this shift into miles per hour to determine your vehicle's speed. Currently, the FCC (Federal Communications Commission) permits operation of traffic radar guns at X Band (10.500 - 10.550 GHz), K Band (24.050 - 24.250 GHz), and Ka Band (33.400 - 36.000 GHz).

Note: A radar detector will not alarm if an officer is not transmitting on any one of the above radar bands.

POP™ Mode

POP™ Mode is a feature on some newer radar guns operating on K or Ka bands. When the gun is in POP™ Mode and activated, a brief burst of energy, less than 1/10 of a second, is transmitted and the vehicle's speed is quickly acquired. A detector without POP™ Mode detection capability cannot respond to this brief transmission. This detector has the power to report this new gun where other detectors cannot!

Laser Facts

It's well documented that many radar guns cannot reliably provide the speed of a targeted vehicle that is traveling in a group of vehicles. In contrast, a laser gun can target a specific vehicle out of a line of traffic and determine its speed. The advantage of laser over radar in terms of target identification is the result of the laser gun's narrow beam. A radar transmission can cover more than a four-lane highway at a distance of 1,000 feet, compared with a laser transmission which covers about 3 feet at the same distance. For best protection, keep these points in mind:

SPEED MONITORING

- Because your vehicle's license plate or headlights are the laser gun's primary targets, mounting your Whistler detector on the dashboard can improve laser detection at short range.
- Do not follow closely behind any vehicle you cannot see through. If you can't see past a vehicle ahead of you, chances are your detector won't either.
- The receiving range of your laser detector will not be the same as a radar detector. Laser guns are most often used at short range.

Whistler Laser/Radar detectors receive all current laser guns which operate at a laser wavelength of 905 +/- 10mm.

- Pro Laser™ I III III
- LT1 20-20
- Ultra Lyte

Laser Tips

If you are the targeted vehicle, a laser gun can often determine your speed within a few seconds after you receive an alert. In this situation there is generally no time to safely adjust your speed. However, if you are traveling near or behind the targeted vehicle and receive an alert, response time should be sufficient. Any laser alert, regardless of duration, requires immediate action!

Other Speed Detection Systems

Several techniques other than radar or laser are used to measure vehicle speeds. When these methods are being used, no detector can provide a warning. These techniques include:

- Pacing - A patrol car drives behind you and matches your driving speed.
- Vascar/Aircraft - The time it takes a vehicle to travel a known distance is measured.

WARRANTY INFORMATION

Consumer Warranty

This Whistler Laser/Radar detector is warranted to the original purchaser for a period of one year from the date of original purchase against all defects in materials and workmanship (3 years for the 1793 SE). This limited warranty is void if the unit is abused, modified, installed improperly, if the housing has been removed, or if the serial number is missing. There are no express warranties covering this product other than those set forth in this warranty. All express or implied warranties for this product are limited to the above time. Whistler is not liable for damages arising from the use, misuse, or operation of this product.

Service Under Warranty

During the warranty period, defective units will be repaired without charge to the purchaser when returned with a dated store receipt to the address below. Units returned without dated store receipt will be handled as described in section **"Service Out Of Warranty."** Due to the specialized equipment necessary for testing a laser/radar receiver, there are no authorized service stations for Whistler brand detectors other than Whistler.

When returning a unit for service under warranty, please follow these instructions:

1. Ship the unit in the original carton or in a suitable sturdy equivalent, fully insured, with return receipt requested to:

Whistler Repair Dept.
1201 North Dixieland Rd
Rogers, AR. 72756

Please allow 3 weeks turnaround time.

IMPORTANT: Whistler will not assume responsibility for loss or damage incurred in shipping. Therefore, please ship your unit insured with return receipt requested. **CODs will not be accepted!**

WARRANTY INFORMATION

2. Include with your unit the following information, clearly printed:
 - Your name and street address (for shipping via UPS), a daytime telephone number and email address, if applicable.
 - A detailed description of the problem (e.g., "Unit performs self-test but does not respond to radar").
 - A copy of your dated store receipt or bill of sale.
3. Be certain your unit is returned with its serial number. For reference, please write your units serial number in the following space: s/n_____.

Units without serial numbers are not covered under warranty.

IMPORTANT: To validate that your unit is within the warranty period, make sure you keep a copy of your dated store receipt. You may register your warranty online at www.whistlergroup.com, however, for warranty verification purposes, a copy of your dated store receipt must accompany any unit sent in for warranty work.

Service Out of Warranty

Units will be repaired at "out of warranty" service rates when:

- The units original warranty has expired.
- Dated store receipt is not supplied.
- The unit has been returned without its serial number.
- The unit has been abused, modified, installed improperly, or had its housing removed.

The minimum out of warranty service fee for your Whistler detector is \$55.00 (U.S.). If you require out of warranty service, please return your unit as outlined in the section "Service Under Warranty" along with a certified check or money order for \$55.00. Payment may also be made by MasterCard, VISA or American Express; **personal checks are not accepted.**

WARRANTY INFORMATION

In the event repairs cannot be covered by the minimum \$55.00 service fee, you will be contacted by a Whistler technical service specialist who will outline options available to you. If you elect not to have your unit repaired, it will be returned to you along with your certified check or money order.

IMPORTANT: When returning your unit for service, be certain to include a daytime telephone number, and email address (if applicable).

Customer Service

If you have questions concerning the operation of your Whistler detector, or require service during or after the warranty period, please call Customer Service at:

1-800-531-0004

Representatives are available to answer your questions Monday - Friday from 8:00 a.m. to 5:00 p.m. (CT) or visit the FAQ's at www.whistlergroup.com

SPECIFICATIONS

1783 Dimensions: 4.65" L x 2.95" W x 1.45" H **Weight:** 6.8 oz.
1793 SE Dimensions: 4.65" L x 2.95" W x 1.45" H **Weight:** 6.8 oz.
Laser Wavelength: 905 ± 50 nanometers (nm)

Radar Frequencies:

10.500 - 10.550 GHz (X Band)
24.050 - 24.250 GHz (K Band)
33.400 - 36.000 GHz (Ka Superwideband)

Operating Temperature Range: -20° C to +80° C (-4° F to +176° F)

Power Requirements:

Operational 12 to 15 volts DC, 250mA nominal
Vehicle Battery Saver, 30mA nominal.

One or more U.S. patents may apply:

#5,146,227, #5,379,456, #5,666,120, #5,990,821

POP™ Mode is a trademark of MPH Industries, Inc.
Specifications are subject to change without notice.

ACCESSORIES

These and other accessories can be ordered directly from Whistler by calling 1-800-531-0004 or visit our online store at www.whistlergroup.com

Order Code	Description	Price
202151	Windshield Bracket Kit	\$ 9.95
206552	Straight Power Cord (5')	\$ 14.95
206553	Coiled Power Cord (7')	\$ 15.95
206880	Hardwire Kit (10') (for wiring to fuse box)	\$ 9.95
206666	Modular Cord Package (includes coiled and straight cords, and power adapter)	\$ 17.95
159032	Package of 8 Suction Cups	\$ 2.95
402081	Non-Skid Dash Pad	\$ 6.95
206660	Straight Modular Cord and Socket Multiplier	\$ 11.95
206661	Coiled Modular Cord and Socket Multiplier	\$ 12.95

*Modular: Interconnecting pieces cord and plug. Shipping and handling (per order) \$5.00 Prices are subject to change without notice.